

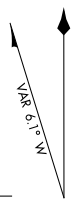
# 16203 AIRPORT DIAGRAM

AL-305 (FAA)

EXECUTIVE (ORL)  
ORLANDO, FLORIDA

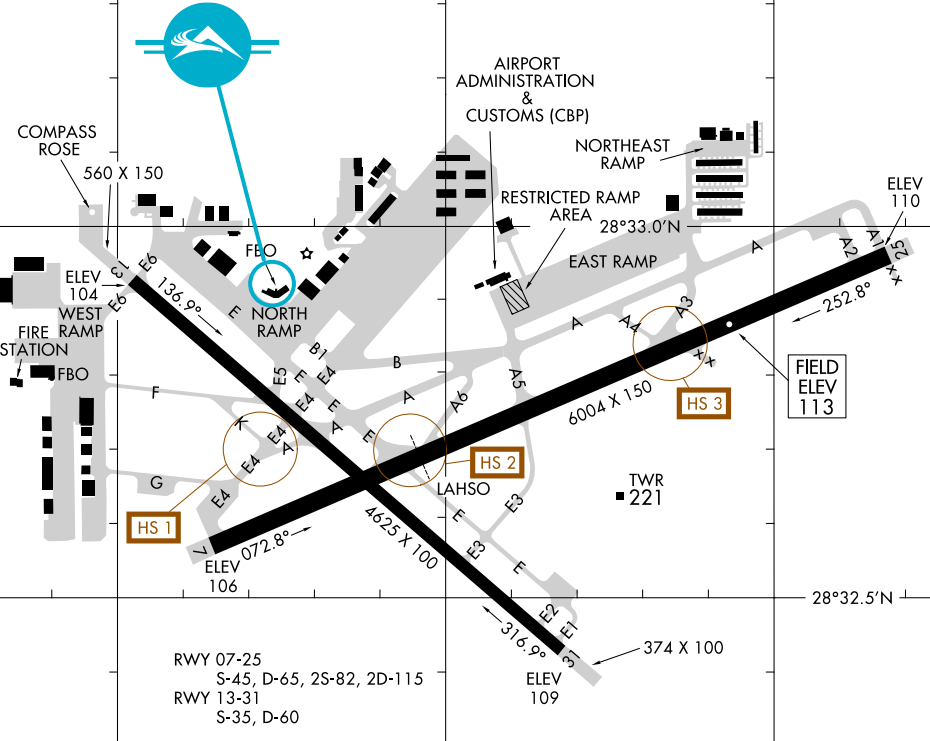
ATIS  
127.25  
EXECUTIVE TOWER ★  
118.7 239.0  
GND CON  
121.4 239.0  
CLNC DEL  
128.45

D



JANUARY 2015  
ANNUAL RATE OF CHANGE  
0.1° W

28°33.5'N



CAUTION: BE ALERT TO RUNWAY CROSSING CLEARANCES.  
READBACK OF ALL RUNWAY HOLDING INSTRUCTIONS IS REQUIRED.

81°20.5'W

81°20.0'W

81°19.5'W

28°32.5'N

28°32.0'N

# AIRPORT DIAGRAM

16203

ORLANDO, FLORIDA  
EXECUTIVE (ORL)